



## Fall Dashboard Trainings

Join us for a series of Zoom Conferences with your WHCCD IR colleagues covering six dashboards pertaining to Course Success and Completion, Guided Pathways, and Program Review. Open to all levels experience with data and dashboards. It is advised that participants access and familiarize themselves with the dashboards ahead time so they can ask any questions.

Each training will be run twice during the course of the semester, and Zoom sessions will be recorded. Want to run a training during your committee, department, or learning area meeting? Contact our office and we'll schedule a training session.

### Contact Information

Kyle Crider  
Director of Accreditation, Research,  
Institutional Effectiveness, and  
Planning  
559-934-2129  
[kylecrider@whccd.edu](mailto:kylecrider@whccd.edu)

Leslie Flaming  
Research Analyst  
559-934-2215  
[leslieflaming@whccd.edu](mailto:leslieflaming@whccd.edu)

Dara Ramos  
Research Assistant  
559-934-2768  
[dararamos@whccd.edu](mailto:dararamos@whccd.edu)

## Training Schedule

### Course Success and Completion Dashboards

- Faculty Course Success Dashboard – Aug. 29 @ 10am and Oct. 8 @ 12pm
- Subsequent Course Outcomes Dashboard – Sept. 23 @ 10am and Nov. 7 @ 12pm

### Guided Pathways Dashboards

- Cohort Momentum Metrics – Sept. 4 @ 10am and Oct. 14 @ 12pm
- Completer Dashboard – Sept. 20 @ 12pm and Oct. 30 @ 10am

### Program Review Dashboards

- Instructional Program Review Dashboard – Sept. 12 @ 12pm and Oct. 22 @ 10am
- Non-Instructional/Support Program Review Dashboard – Oct. 3 @ 12pm and Nov. 13 @ 10am

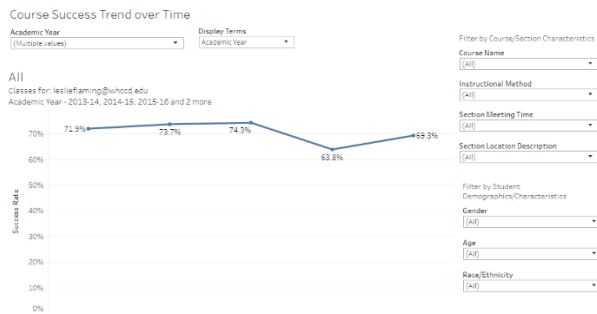


## Course Success and Completion

### Faculty Course Success Dashboard

#### Session Learning Outcomes

- Faculty will be able to identify their courses with the highest and lowest success rates
- Faculty will be able to identify trends in their course success rates
- Faculty will be able to identify equity gaps in their course success rates
- Faculty will evaluate course-level success rates as they relate to Institution-Set Standards and Vision for Success goals



This will give you the framework you need to dig into your own data to inform areas of focus for your professional development or answer questions about how your students are in doing in your courses. **Course Note:** This dashboard populates with your course data; if you have not taught any classes you are welcome to follow along in the training but won't have any data available.

[Click Here To Register for the August 29<sup>th</sup> 10:00 am Training](#)

[Click Here to Register for the October 8<sup>th</sup> 12:00 pm Training](#)

[Click Here to Go to Dashboard](#)



## Subsequent Course Outcomes - \*New\* (Advanced)

### Session Learning Outcomes:

- Participants will be able identify grade distribution trends as students progress from one course to the next
- Participants will be able to refine inquiry by course and student characteristics
- Participants will evaluate course-level success rates as they relate to Institution-Set Standards and Vision for Success goals

Have you ever asked “after students complete my course, are they successful in \_\_\_\_\_ during the next semester?” Be one of the first to access the dashboard that enables inquiry into how students in one course do in another. Faculty users will have the ability to compare how students in their sections have performed in subsequent (or previous) courses. **Note:** This is an advanced dashboard; users attending this training should have attended at least one other prior dashboard training.



[Click Here to Register for the September 23<sup>rd</sup> 10:00 am Training](#)

[Click Here to Register for the November 7<sup>th</sup> 12:00 pm Training](#)

[Click Here to Go to Dashboard](#)

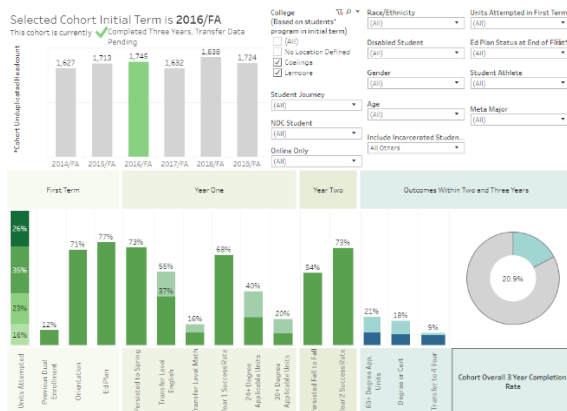


## Guided Pathways

### Cohort Momentum Metrics Dashboard

#### Session Learning Outcomes

- Participants will be able to articulate how cohorts are formed
- Participants will identify potential bottlenecks in student progress toward completion
- Participants will be able to disaggregate student cohorts
- Participants will evaluate cohort success and completion as they relate to Institution-Set Standards and Vision for Success goals



Within a Guided Pathways framework, it becomes vital to examine how cohorts of first-time students' progress through to their academic goals. This dashboard provides a close look at early momentum points including rates of students achieving unit thresholds and first year transfer level English and Math completion, degree/cert completion rates, and transfer rates. Assorted filter options allow for further examination of these rates by sub-population.

[Click Here to Register for the September 4<sup>th</sup> 10:00 am Training](#)

[Click Here to Register for the October 14<sup>th</sup> 12:00 pm Training](#)

[Click Here to Go to Dashboard](#)

[Click Here for Recommended Reading: \*Early Moment Metrics: Leading Indicators for Community College Improvement\*. Community College Research Center, 2019.](#)

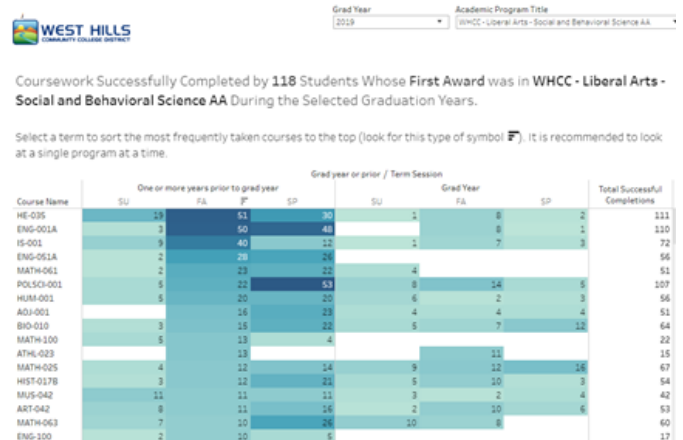


## Completer Dashboard

### Session Learning Outcomes

- Participants will be able to identify trends in program awards
- Participants will be able to identify the courses most commonly completed by program completers
- Participants will completion data as they relate to Institution-Set Standards and Vision for Success goals

The Completer Dashboard has been merged with the Most Common Courses by Program dashboard. This dashboard brings together broad analysis of trends of degrees and/or certificates awarded by program with the ability to deep dive into graduates most frequently completed courses by term. Ideal for creating and maintaining effective program pathways.



[Click Here to Register for the September 20<sup>th</sup> 12:00 pm Training](#)

[Click Here to Register for the October 30<sup>th</sup> 10:00 am Training](#)

[Click Here to Go to Dashboard](#)



## Program Review

### Instructional Program Review Dashboard

#### Session Learning Outcomes

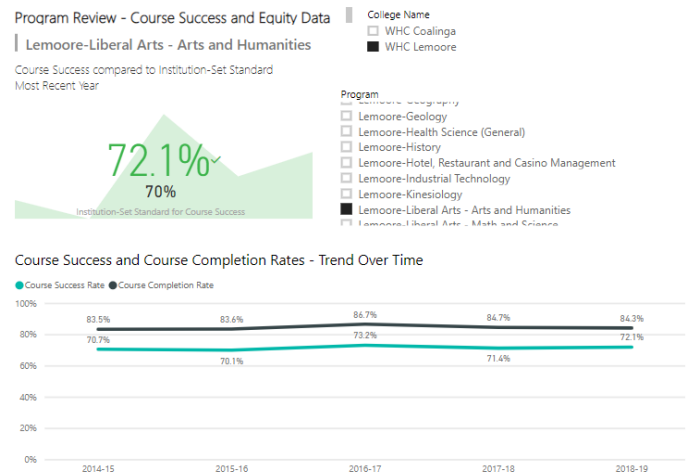
- Participants will be able to compare program outcomes against Institution-Set Standards
- Participants will be able to identify equity gaps in program course success
- Participants will evaluate course success and program completion as they relate to Institution-Set Standards and Vision for Success goals

Working on an instructional program review this year? Gain familiarity with the dashboard functionality with this overview of the dashboard for instructional programs.

[Click Here to Register for the September 12<sup>th</sup> 12:00 pm Training](#)

[Click Here to Register for the October 22<sup>nd</sup> 10:00 am Training](#)

[Click Here to Go to Dashboard](#)



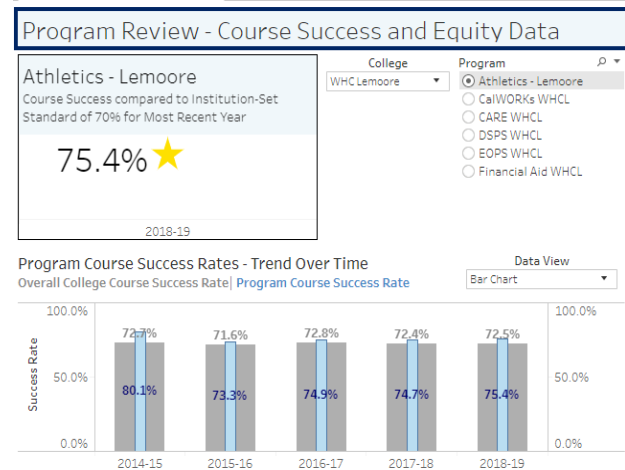


## Noninstructional/Support Program Review Dashboard

### Session Learning Outcomes

- Participants will be able to compare program outcomes against Institution-Set Standards
- Participants will be able to identify equity gaps program participants' course success
- Participants will evaluate course success and program completion as they relate to Institution-Set Standards and Vision for Success goals

Working on a noninstructional/support program review this year and your program has students coded in Colleague? Gain familiarity with the dashboard functionality with this overview of the dashboard for Noninstructional programs.



[Click Here to Register for the October 3<sup>rd</sup> 12:00 pm Training](#)

[Click Here to Register for the November 13<sup>th</sup> 10:00 am Training](#)

[Click Here to Go to Dashboard](#)